



Guangxi Ruijie Slag Equipment Manufacturing Co., LTD



Environmental Protection And Technology • Environmental Protection And Technology Innovate The Future



Central Control System For Incineration Bottom Ash Treatment

CONTENTS

- 1 Introduction to The Central Control System
- 2 Central Control System Function
- 3 Advantages Of The Central Control System

— **Profession** **Quality** **Efficiency** **Service** —



01



Introduction To The Central Control System

The incineration bottom ash treatment central control system is an important system used to control and manage the slag treatment process, which integrates various functions such as automatic control, data processing, remote monitoring, etc., to improve the efficiency, safety and environmental protection of slag treatment.

◆ Overview Of The Central Control System

The central control system of incineration bottom ash treatment realizes real-time monitoring and accurate control of all links in the incineration bottom ash treatment process by integrating various sensors, actuators, controllers and computer software. The system can automatically receive real-time data from the production site, quickly process and analyze, and remotely control and optimize the incineration bottom ash treatment equipment according to preset process parameters and control strategies.





The Central Control System Is Composed

Data Acquisition Systems

Through various sensors installed on the incineration bottom ash treatment equipment, key parameter data such as temperature, pressure, flow rate, and weight are collected in real time.

Control The Execution System

According to the received data and preset control strategies, the slag handling equipment can be remotely controlled through the actuator, such as adjusting the equipment parameters, starting/stopping the equipment, etc.

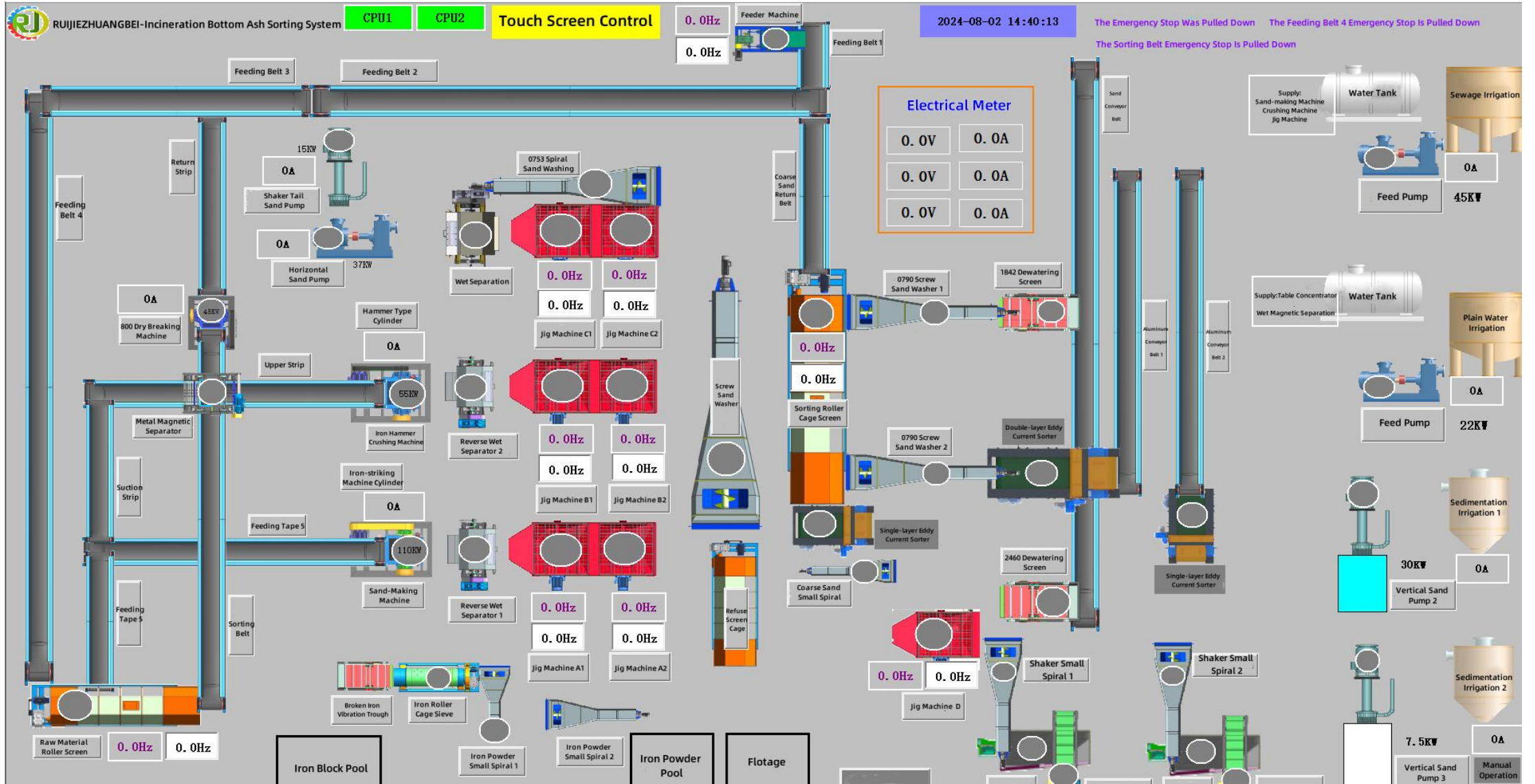
Data Processing And Analysis Systems

The collected data is processed and analyzed, and useful information is extracted to provide data support for optimizing control strategies

Human-machine Interface Systems

Provides an intuitive and simple operator interface that allows operators to monitor the slag handling process in real time and make necessary interventions and adjustments.





The Operation Interface Of The Central Control System



02



Central Control System Function

With its advanced functions such as intelligence, automation, remoteness and data, the central control system of incineration bottom ash treatment has injected new vitality into the development of the incineration bottom ash industry and promoted the development of the slag industry in a more efficient, environmentally friendly and sustainable direction.

It can display the parameters and status of the slag treatment process in real time, helping the operator to have a comprehensive understanding of the production situation

Real-time Monitoring

The collected data is processed and analyzed, and useful information is extracted to provide data support for optimizing control strategies.

Data Analysis

It supports mobile phones, computers for remote access and control functions, so that managers can monitor and manage the slag treatment process at any location.

Remote Monitoring

Automatic Control

Alarm And Fault Diagnosis

According to the preset process parameters and control strategies, the incineration bottom ash treatment equipment is automatically controlled, reducing manual intervention and improving production efficiency and stability.

When there is an abnormal situation in the process of incineration bottom ash treatment, it can automatically alarm and prompt the cause of the fault to help the operator take measures to solve the problem in time.

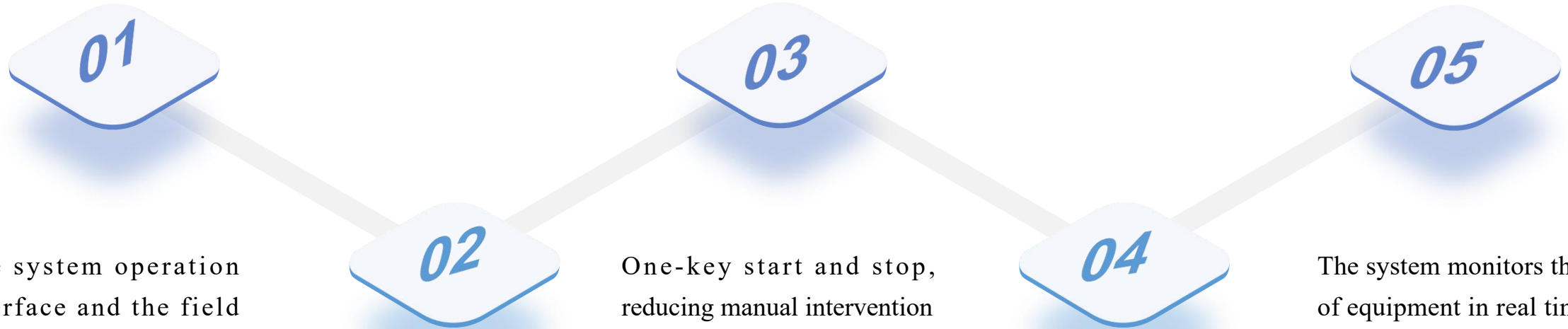


03



Advantages Of The Central Control System

As an important part of modern industrial environmental protection and efficiency improvement, the advantages of the incineration bottom ash treatment central control system are not limited to the convenience brought by automatic control, but also to improve the green, intelligent and safe production process in an all-round way.



The system operation interface and the field equipment are placed in the same position, which is simple and easy to understand, and can be used without professional personnel and simple training.

Through precise control and optimal adjustment, the energy consumption and material consumption in the process of incineration bottom ash treatment are reduced, and the production cost is reduced.

One-key start and stop, reducing manual intervention and waiting time; It has the function of early warning, which can predict whether the production line will be stacked in advance, reducing labor costs and time costs.

The incineration bottom ash treatment process is strictly controlled and managed, which reduces the emission of pollutants and environmental pollution, and improves the environmental protection level of the enterprise.

The system monitors the use of equipment in real time 24 hours a day, and alarms immediately when there is a failure, which can find and deal with abnormal situations in time, avoid accidents, and ensure the safety of production personnel.

06

The PLC adopts Siemens brand, the circuit breaker adopts Schneider brand accessories, and the electrical cabinet adopts 1.5mm stainless steel material + spraying, which is anti-corrosion and moisture-proof, and improves the service life of the equipment.

07

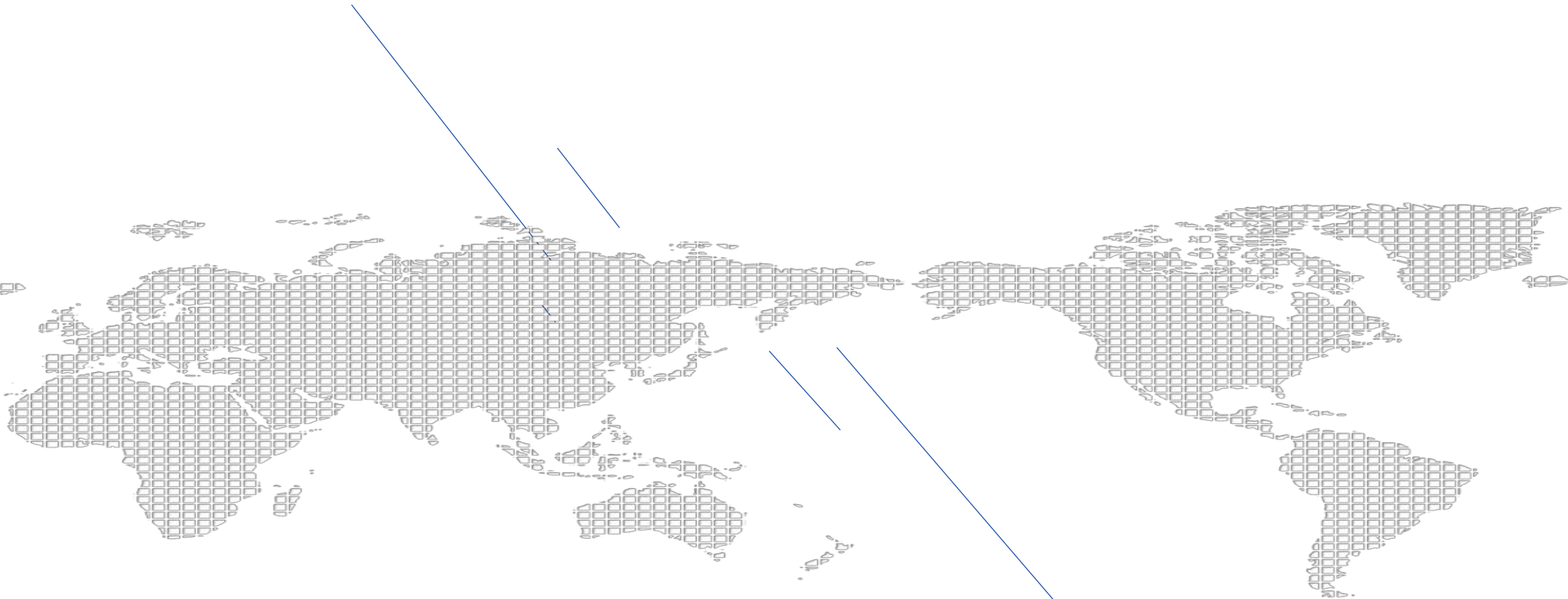
The electrical cabinet is small and occupies a small area, which improves the rational use of the site.

08

The system supports a variety of communication protocols and interface standards, and can easily access various external devices and sensors to achieve seamless connection with other production systems;

09

Mobile phones and computers can be connected to the system, and you can log in to the system to check the operation of the device in other places.



Guangxi Ruijie Slag Equipment Manufacturing Co., LTD

Address: Peasant-worker Pioneer Park, Minle Town, Beiliu City, Guangxi, China

Contact: Junsheng Chen

Telephone: 86 17878005688

E-mail: R01@ruijie-equipment.com